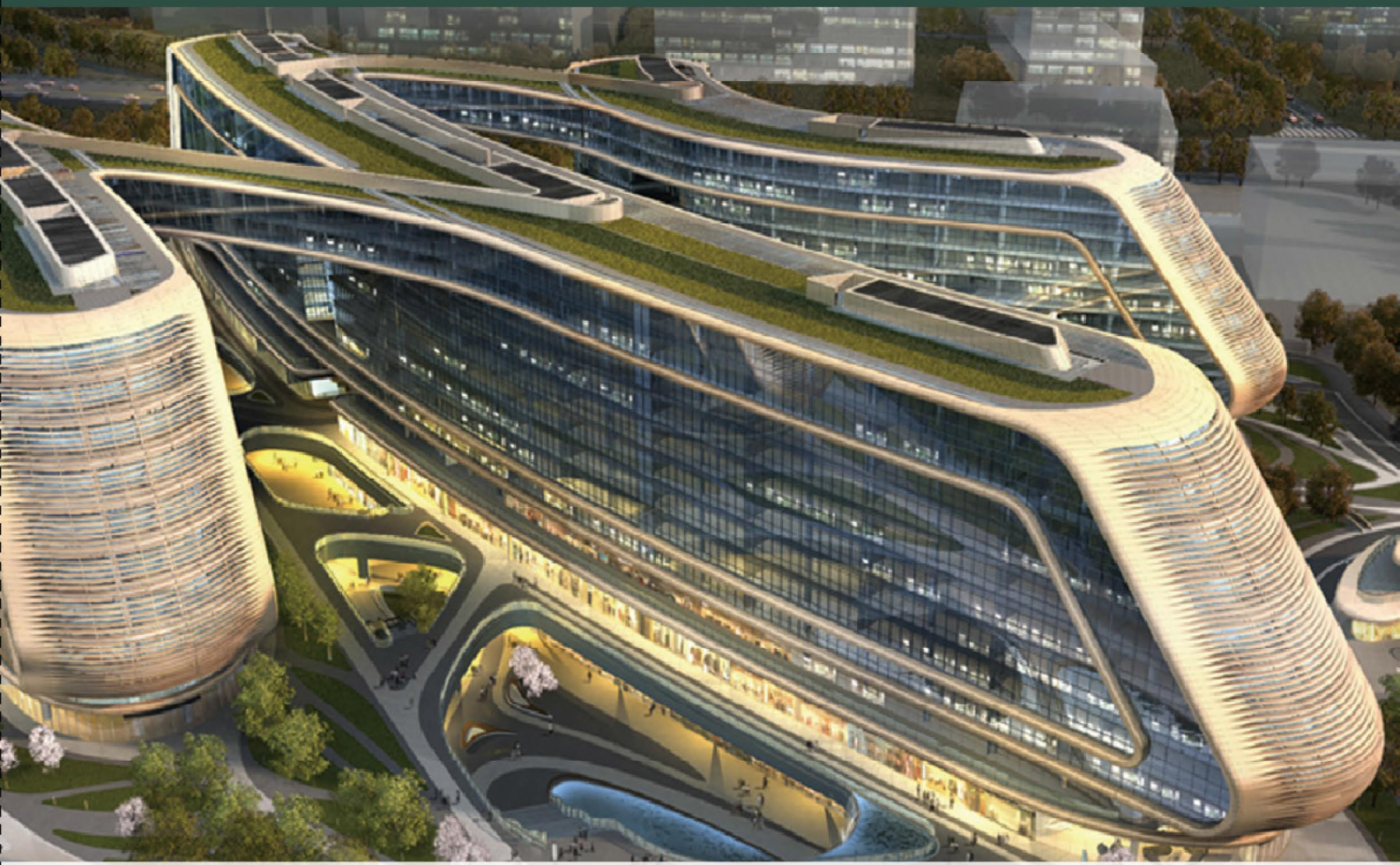


We are the leader in fire door industry.



Industrial Door / Civil door



About sunflower

Sunflower Doors is one unit of CHINA FIRE PROTECTION ASSOCIATION and SHANGHAI FIRE PROTECTION ASSOCIATION. The company ever attended to edit the china national standards "12J609 Fire Door & Windows". And it professional producing all kinds of steel fire door, wooden fire door, wood and steel fire door, security door, fire security door, glass fire door, steel entry door, fire rolling up doors and etc. After many years working and market developing, the company now has two named brands, one is SUNFLOWER another is JOSINO. The company has gotten over 60 kinds of certification issued by China Certification Center for Fire Products Ministry of Public Security. It is a professional company having various mechanical equipments and with ability of design, manufacture, sales and visit installation.

The company now owns two production basements in Zhejiang and shanghai and there are over 500 workers. The company has ISO9001 certification, German TUV factory certification, and won the CFPA honorary enterprise, integrity private company, and China named brand. Pursuit excellences, seeking high service are our company spirit. The company has perfect quality controlling system, and sale service system. And it will strictly make the door according to the standards GB17565-2007, GB12955-2008. Besides that, the company has set up professional department for sales service to make sure our clients satisfied. Welcome to visit our company.

Now our steel fire door has successfully got the certification of BS and INTERTEK. Our products have been far exported to American, Mexico, Brazil, Singapore, Phillipine, Egypt, UAE and so on.

TABLE OF CONTENTS

SUNFLOWER

Sunflower History

Industrial Door

Steel fire door	7
Wooden Fire Door	9
Steel Wood Fire Door	11
Steel soundproof door	13
Explosion Relief Door	15
Sterile door	17
Anti Explosion Door	19
Apartment Door	21
Sguite Door	23
Steel Fireproof Windows	26

Civil Door

Steel Door	28
Armored Door	30
Wooden Door	32
Aluminum Door	34

Project case	36
--------------	----



SunFlower

1993-2006

1993, established "Shanghai Yangpan Metal Products Co.,Ltd", began to produce steel door.

2006, renamed "Shanghai Sunflower Group Co.,Ltd", upgraded products technology and enlarged products range, covering steel fire door, wooden fire door, steel wood door, security door, glass fire door, fire rated rolling doors.

In November, Shanghai Sunflower was awarded "Shanghai fire safety industry integrity and commitment unit"

2007-2009

2007, Shanghai Sunflower was selected into Fire Safety Association member in Jiangsu Province.

2008, Shanghai Sunflower was selected to Shanghai FPA member. April, Sunflower set up 2nd factory "Zhejiang Jiahui Doors Co.,Ltd" in Wuyi, Zhejiang.

2009, Shanghai Sunflower Fire Safety Equipment Co.,Ltd passed ISO9001: 2000 international quality management system certification.

In July, Shanghai Sunflower fire door passed the evaluation by China Certification Center for Fire Products Ministry of Public Security, and awarded certificates on pattern and design over 50 series, including steel door, wood door, steel wood door, glass door etc.

In November, Sunflower was selected to china fire protection association member.



2010-2011

2010, Sunflower passed the evaluation by China Light Industry Products Quality Guarantee Center, Jiahui brand fire door and security door was awarded "Top Brand in China" In January, Sunflower signed contract with Hengdian Zhejiang film and Television Group, and become the exclusive supplier to provide fire doors for over 100 national wide subordinated Hedian World Studios.

In December, Zhejiang Sunflower company passed audit and got German TUV factory condition certification.

2011, Zhejiang Jiahui Doors Co.,Ltd was awarded yearly "Honesty private enterprise" by local government.

In July, Shanghai Sunflower Group Equipment Co.,Ltd was awarded "Honesty private enterprise" by Shanghai FPA and Shanghai government.

In November, Sunflower fire door and security door series products were awarded "Zhejiang Famous Hardware" by Zhejiang Hardware Products Associate.

2012-2013

2012 Shanghai Sunflower Group Co.,Ltd was awarded steel fire door series pattern and design certificate by China Certification Center for Fire Products Ministry of Public Security(CCCFP.)

In February, Shanghai Sunflower moved to new factory located in Shanghai Jiading District, production capability was upgraded largely, and started to produce steel wood series fire doors.

In March, Zhejiang Sunflower Co.,Ltd was awarded yearly "Honesty private enterprise" by local government.

In April, Zhejiang Sunflower passed ISO9001: 2000 international quality management system certification.

In May, Sunflower fire doors was awarded China Door City fire door top 10.

May, "plus sink" fire door was named China's top ten brands doors are fire doors.

2013, Zhejiang Sunflower Co.,Ltd was moved to new factory located in Zhejiang Wuyi, the production capability was increased largely.

In January, Zhejiang Sunflower awarded the 10th "Customer Trust Company" hosted by government.

May, Sunflower door was awarded "2013 China Door Industry Fire Door Top 10 Model Brand"

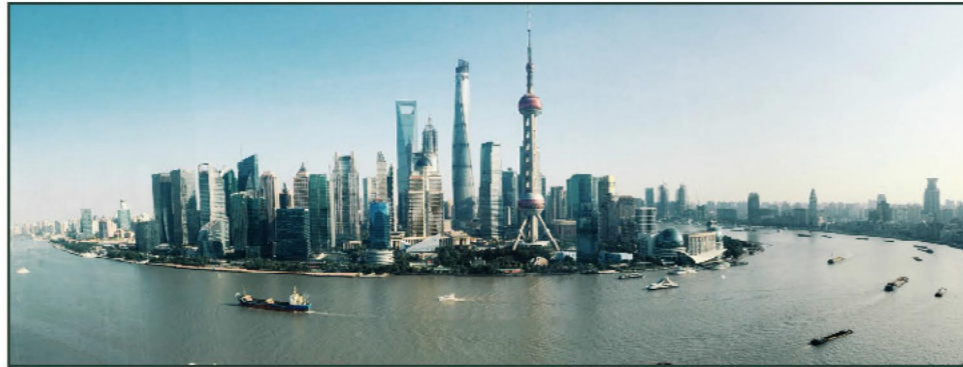
In July, Zhejiang Sunflower awarded "China's Top 500 Up and Coming Home Furnishing Company"

WH、BS CERTIFICATE

美标欧标

WH、BS CERTIFICATE

We are the top manufacturer deserve your trust.



Intertek Testing & Certification Limited
 Intertek House, Civic Road, Leatherhead, Surrey, KT22 7SB, United Kingdom
 Phone: +44 (0)1372 370000 Fax: +44 (0)1372 370999
 E-mail: cpt.int@intertek.com Web: www.intertek.com

Intertek Scheme Number: ITS-09/01
 Certificate Number: ITS-09/0154

Certificate of Conformity

This certificate shows that the bearer has successfully completed the requirements of ITS-09/01. The company has been registered within the ITS-09/01 scheme for the products detailed in the accompanying schedule.

Intertek Warnock Hersey Mark for fire resisting doors and hardware

Certificate Holder: Shanghai Sunflower Group Co., Ltd.
Address: No.133 Huadu Road, Chengqi New Industry Zone, Yongkang City, Zhejiang Province, 321300, China.
T: + 86 512 5017 8085 **F:** + 86 512 5017 8086
E: david@sundoors.com **W:** www.sunflowergroup.com

Product: Single Leaf Wooden Fire Door
Door Type: Timber (wooden) door leaf and frame; door leaf of site and rail construction
Product description: SUNFLOWER, SF-FD02 3' x 7'
Rating and principal characteristics: Fire resistance, Integrity 60 minutes & Insulation 60 minutes
Test standard(s): EN 1634-1:2014
Evaluation Criteria (general): EN 1363-1:2012
Schedule: 160511005SHF-6P-1B1

Date of First Issue: 20 Mar-2017
Revision number: -
Revision date: -
Valid Until: 20 Mar-2022

This Certificate is for the exclusive use of Intertek's Client and is provided pursuant to the Certification agreement between Intertek and its Client. Intertek's responsibility and liability are limited to the terms and conditions of the agreement. Intertek assumes no liability to any party, other than to the Client in accordance with the agreement, for any loss, expense or damage occasioned by the use of this certificate. Only the Client is authorized to permit copying or distribution of this certificate and then only in its entirety. Use of Intertek's Certification mark is restricted to the conditions laid out in the agreement. Any further use of the Intertek name for the sale or advertisement of the tested material, product or service must first be approved in writing by Intertek.

David Bigland Certification Manager - Building Products	<i>D. Bigland</i>	20 Mar-2017
Name/Position	Signature	Date

Page 1 of 2

Intertek Testing & Certification Limited
 Intertek House, Civic Road, Leatherhead, Surrey, KT22 7SB, United Kingdom
 Phone: +44 (0)1372 370000 Fax: +44 (0)1372 370999
 E-mail: cpt.int@intertek.com Web: www.intertek.com

Intertek Scheme Number: ITS-09/01
 Certificate Number: ITS-09/0140

Certificate of Conformity

This certificate shows that the bearer has successfully completed the requirements of ITS-09/01. The company has been registered within the ITS-09/01 scheme for the products detailed in the accompanying schedule.

Intertek Warnock Hersey Mark for fire resisting doors and hardware

Certificate Holder: Shanghai Sunflower Group Co., Ltd.
Address: No. 6, Jiahai Road, Cunnanshi Industrial Zone, Wuyi Town, Wuyi City, Zhejiang Province, 321200, CHINA.
T: + 86 512 5017 8085 **F:** + 86 512 5017 8086
E: david@sundoors.com **W:** www.sunflowergroup.com

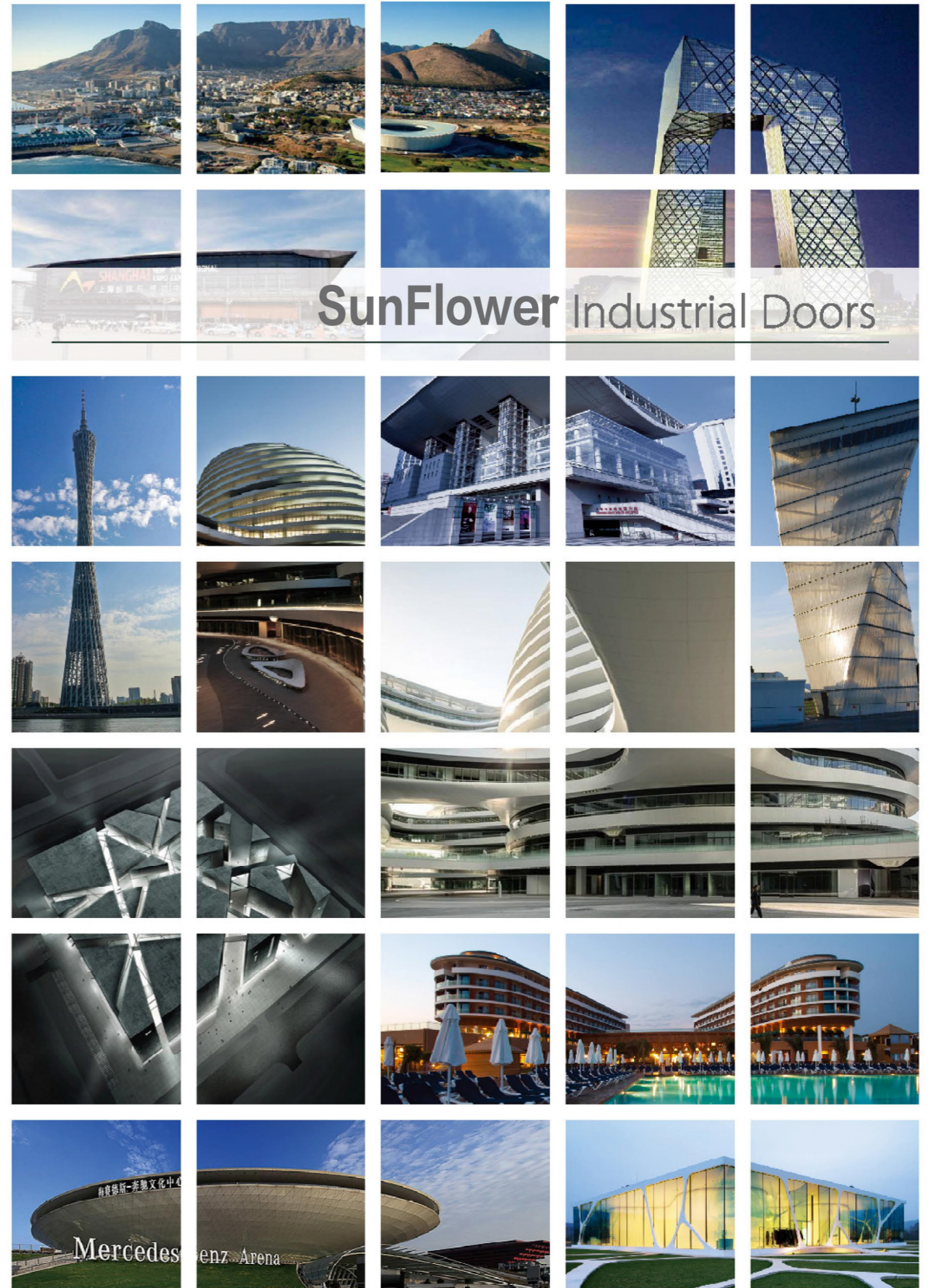
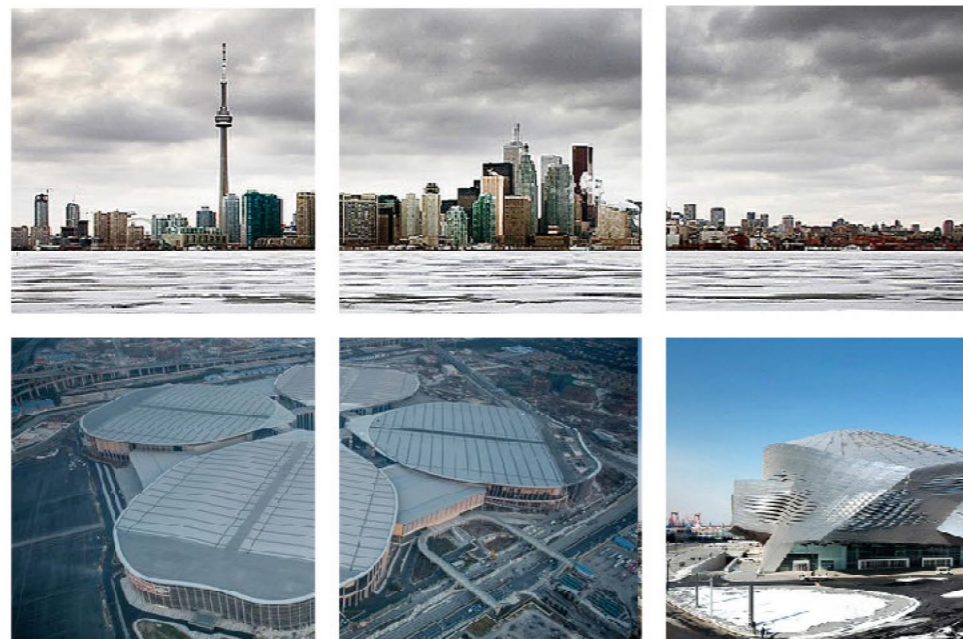
Product: "Double Leaves Swing Steel Fire Door Assembly"
Type: Steel fire door and frame
Product description: Single action, double door (SADD)
Rating and principal characteristics: 120 minutes Integrity & 30 minutes Insulation
Test standard(s): BS 476-22:1987
Schedule: 140829012SHJ-BP-1

Date of First Issue: 02 Apr 2015
Revision number: 1
Revision date: 08 Sep 2015
Valid Until: 02 Apr 2020

This Certificate is for the exclusive use of Intertek's Client and is provided pursuant to the Certification agreement between Intertek and its Client. Intertek's responsibility and liability are limited to the terms and conditions of the agreement. Intertek assumes no liability to any party, other than to the Client in accordance with the agreement, for any loss, expense or damage occasioned by the use of this certificate. Only the Client is authorized to permit copying or distribution of this certificate and then only in its entirety. Use of Intertek's Certification mark is restricted to the conditions laid out in the agreement. Any further use of the Intertek name for the sale or advertisement of the tested material, product or service must first be approved in writing by Intertek.

David Bigland Certification Manager - Building Products	<i>D. Bigland</i>	08 Sep 2015
Name/Position	Signature	Date

Page 1 of 2

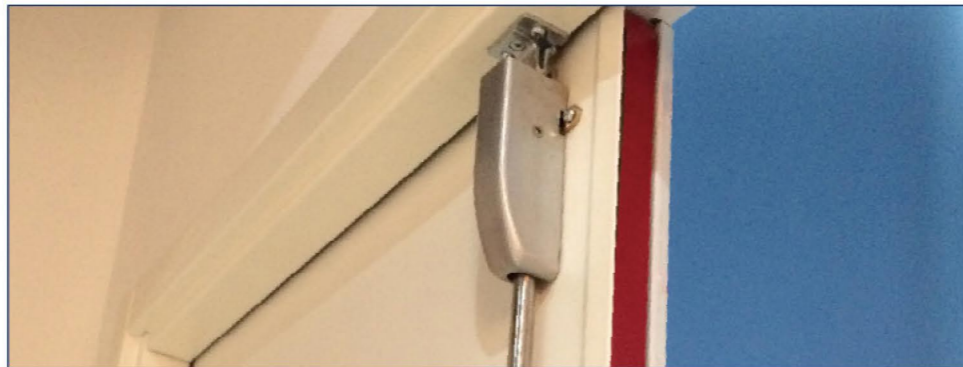


SunFlower Industrial Doors

Steel fire door

钢质防火门
Steel fire door
 Industrial door

Steel fire door part



PRODUCT FEATURES

- Standards: GB 12955-2008&ISO9001 & UBC Standard 7-2(1997) & BS476
- Certificate: 150mins BS & 120mins WHI & 90/60/30mins Chinese certificate
 Door panel is 0.8mm galvanized steel panel (1.0mm is also acceptable)
 Steel frame is made of 1.2mm galvanized steel panel (1.5/2.0mm is also acceptable)
- Filling: Expansion Perlite or Rock Wool
 Door edge is covered by 24*2mm fire seal except the bottom one
- Door Thickness: 50mm
- Strong points: The two door panels are fixed by nails which will be covered by 24*2mm fireproof seal. And the seal will be stuck all around the door edge except the bottom one. And the Door frame has a rabbet with fire seal inserted. The door appearance has no welding point, and the door will looks more beautiful.

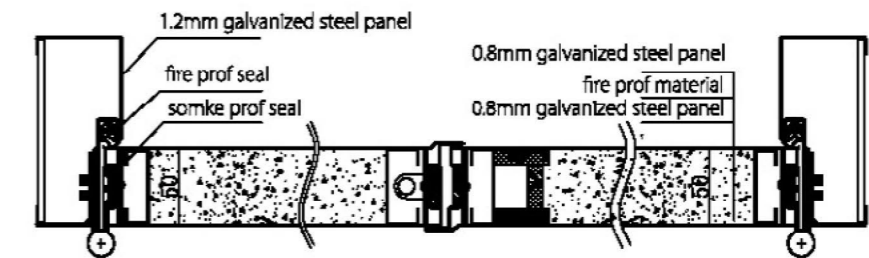
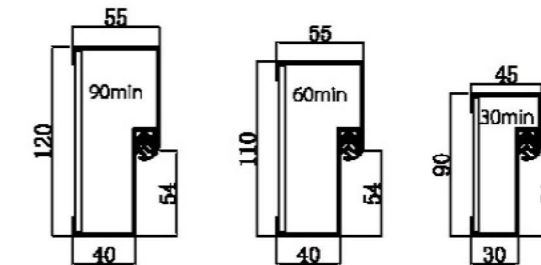
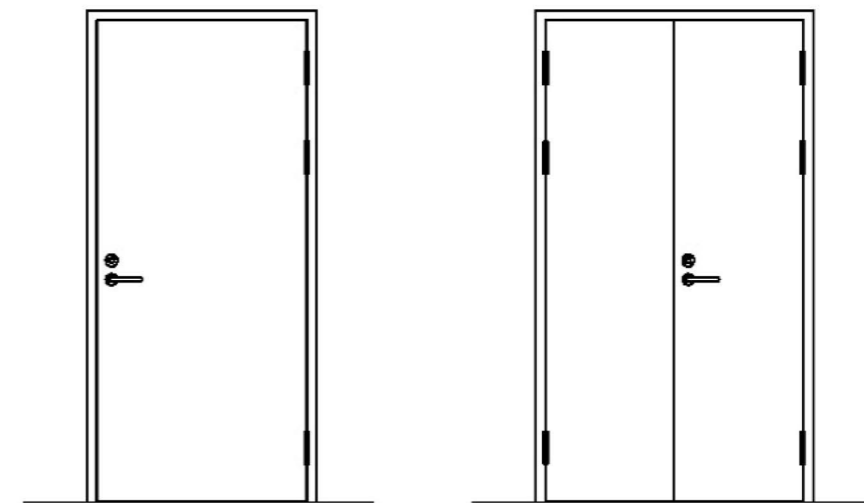
APPLICATION RANGE

- This door is used in public place in real estate.
- And this door is especially suitable for commercial building, chemical building.
- Color and design can be made according to your needs



Steel fire door

Drawings



Technical Parameters

Steel fire door	Single	Double
FP Time	150/120/90/60/30mins	150/120/90/60/30mins
Door THK	50mm	50mm
Door Material	0.8mm Galvanized Steel	0.8mm Galvanized Steel
Frame Depth	120mm/110mm/90mm	120mm/110mm/90mm
Frame Material	1.2 mm Galvanized Steel	1.2 mm Galvanized Steel
Filling	Perlite/Rock Wool	Perlite/Rock Wool
Fireproof Glass THK	26mm	26mm

Wood fire door

木质防火门

Wood fire door

Wood fire door single, Double

single door part



PRODUCT FEATURES

- Standards: GB 12955-2008& ISO9001
- Certificate: 90/60/30mins Chinese certificate
- Filling: Expansion Perlite or Rock Wool
- Door Thickness: 50/45/40mm
- The door frame is made of solid pine wood, fireproof board and veneer board. And the depth of frame is 100mm. The door is made of solid skeleton, fireproof material, fireproof board and veneer board

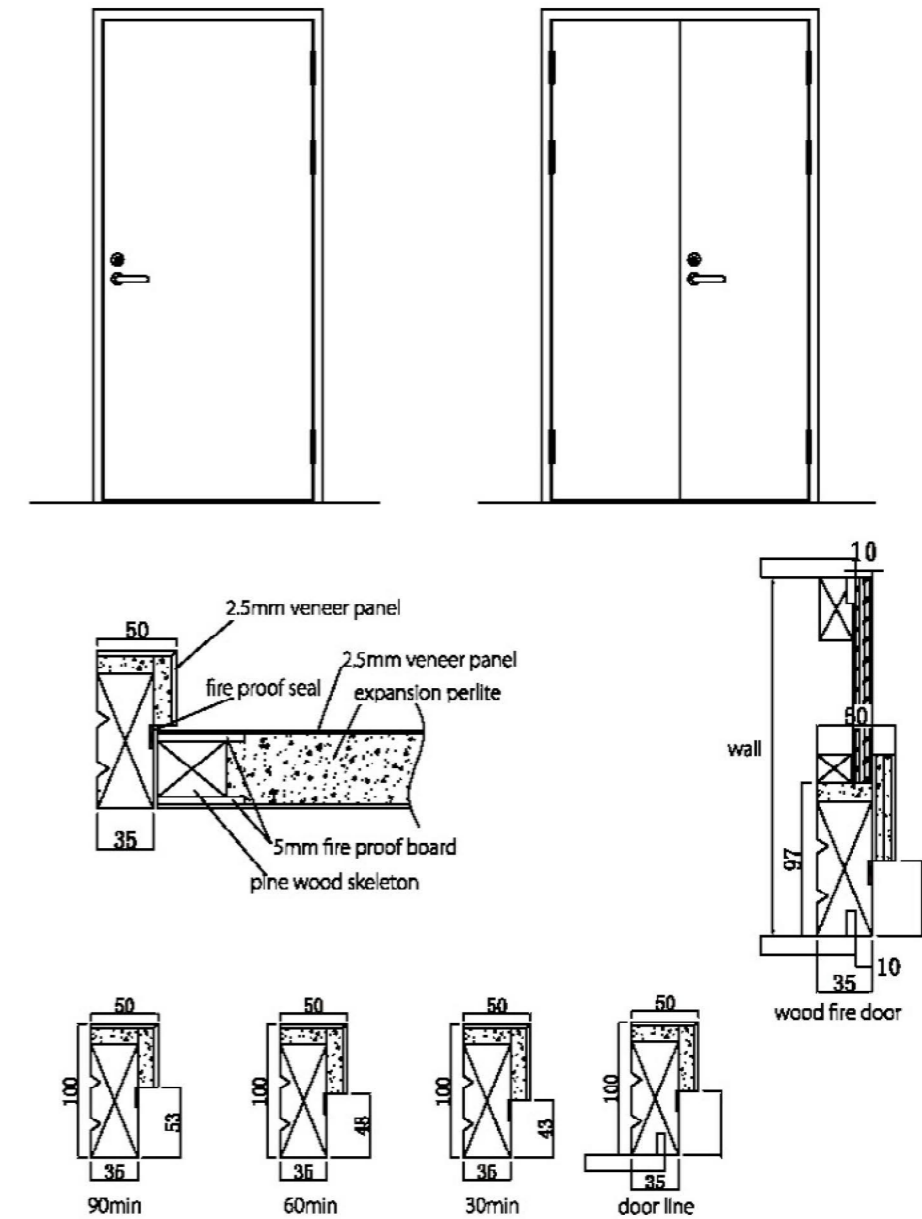
APPLICATION RANGE

- This door is used in public place in real estate.
- And this door is especially suitable for nice fitment house, hotel building.
- Color and design can be made according to your needs



Wood fire door

Drawings



Technical Parameters

Wooden Fire Door	Single	Double
FP Time	90/60/30mins	90/60/30mins
Door THK	50mm/45mm/40mm	50mm/45mm/40mm
Door Material	Pine	Pine
Frame Depth	100mm	100mm
Frame Material	Pine+Fireproof board	Pine+Fireproof board
Filling	Perlite	Perlite
Fireproof Glass THK	26mm	26mm

Steel wood fire door

钢木质隔热防火门

Steel wood fire door

Single, Double

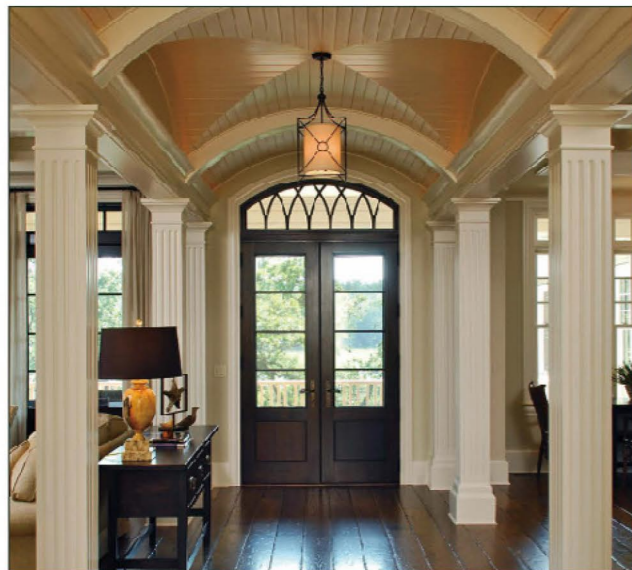


PRODUCT FEATURES

- Standards: GB 12955-2008& ISO9001
- Certificate: 90/60/30mins Chinese certificate
- Filling: Expansion Perlite or Rock Wool
- Door Thickness: 50mm
- The door frame is made of 1.2mm galvanized steel panel. And the depth of frame is 100mm. The door is made of solid skeleton, fireproof material, fireproof board and veneer board

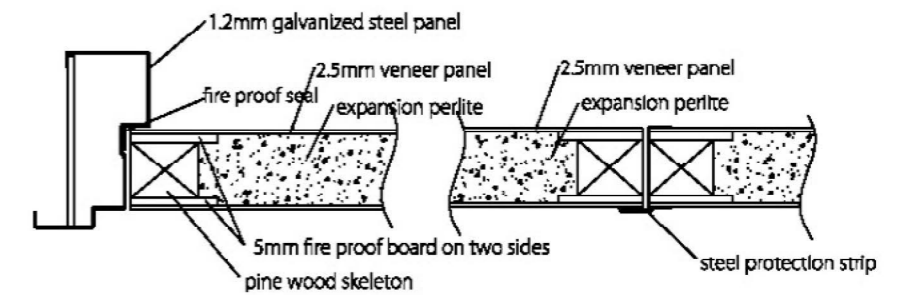
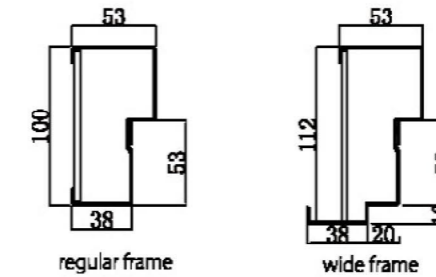
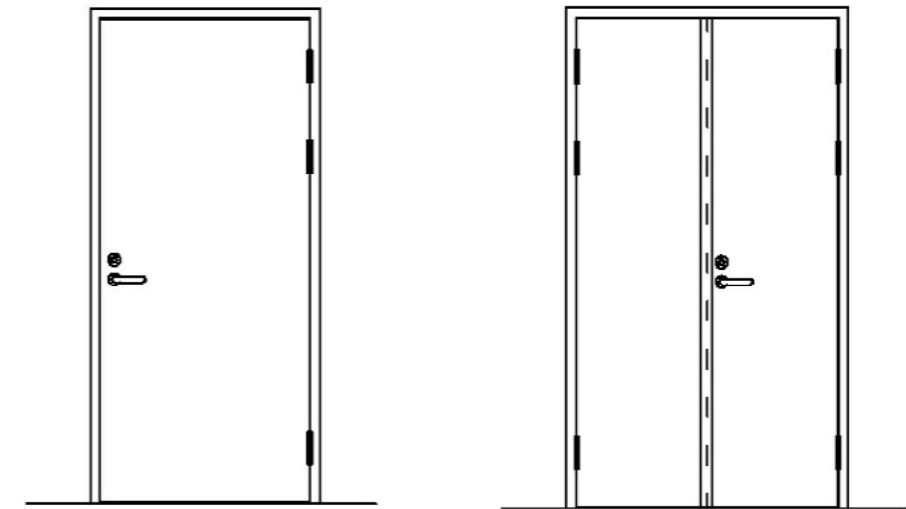
APPLICATION RANGE

- This door is used in public place in real estate.
- And this door is especially suitable for nice fitment house, hotel building.
- Color and design can be made according to your needs.



Steel wood fire door

Drawings



Technical Parameters

Steel Wood Fire Door	Single	Double
FP Time	90/60/30mins	90/60/30mins
Door THK	50mm/40mm	50mm/40mm
Door Material	Pine +5mm Fireproof Board	Pine +5mm Fireproof Board
Frame Depth	100mm	100mm
Frame Material	1.2mm Galvanized Steel	1.2mm Galvanized Steel
Filling	Perlite	Perlite
Fireproof Glass THK	26mm	26mm

钢质隔声门

Soundproof Door
Industrial door Single

Drawings



PRODUCT FEATURES

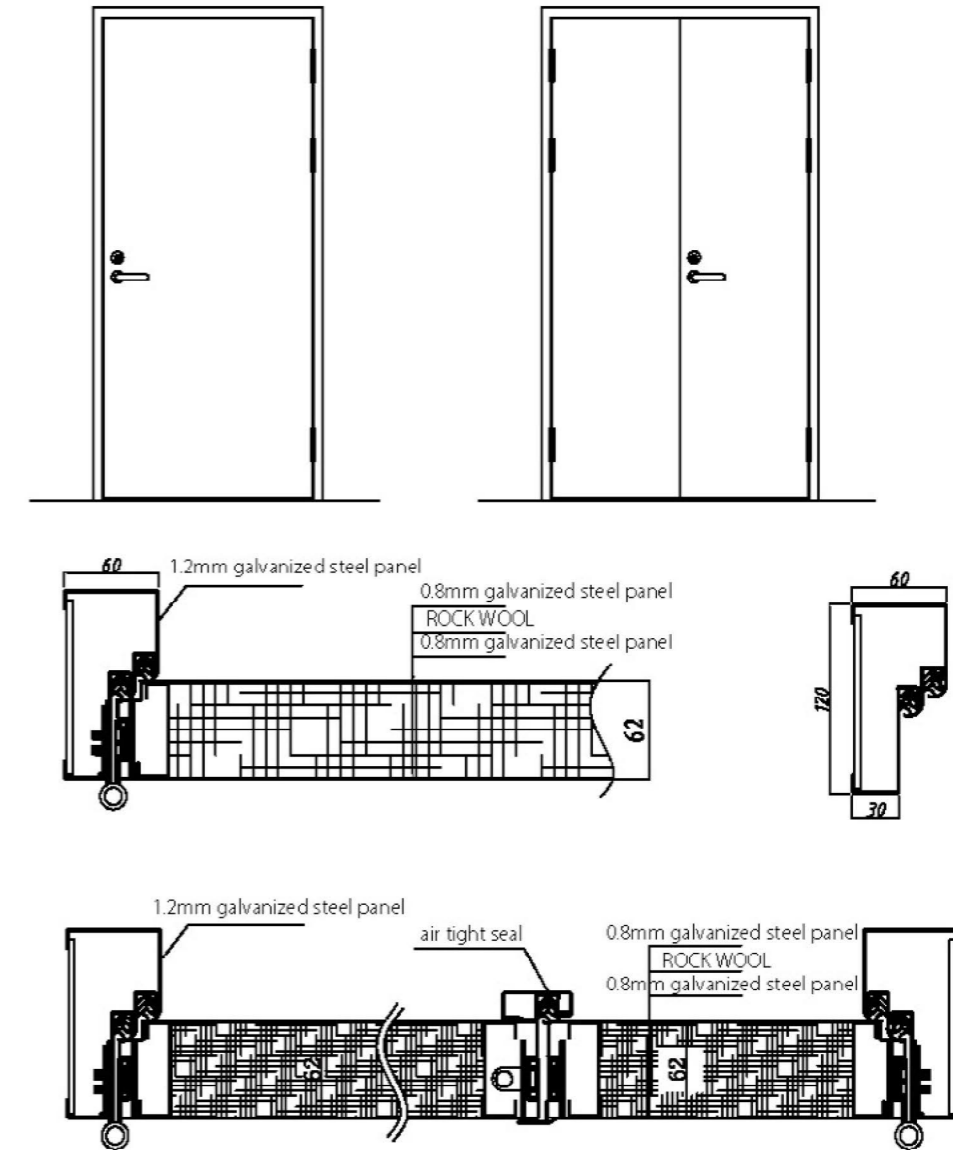
- Standards: GB/T8485-2008 & ISO9001
- Acoustic: 42 DB
Door panel is 1.0 mm galvanized steel panel
Steel frame is made of 1.5mm galvanized steel panel (2.0mm is also acceptable)
- Filling: Expansion Perlite or Rock Wool
Door edge is covered by 24*2mm fire seal except the bottom one
- Door Thickness: 50mm
- Strongpoint: The two door panels are fixed by nails which will be covered by 24*2mm fireproof seal. And the seal will be stuck all around the door edge except the bottom one. And the Door frame has double rabbets with seal inserted.

APPLICATION RANGE

- This door is used in public place in real estate.
- And this door is especially suitable for Air condition room, cinema and entertainment place.
- Color and design can be made according to your needs



Drawings



Technical Parameters

Soundproof Door	Single	Single
Acoustics	42dB	42dB
Heat preservation	1.8-2.2W/m.k	1.8-2.2W/m.k
Door THK	62mm	62mm
Door Material	0.8mm Galvanized Steel	0.8mm Galvanized Steel
Frame Depth	120mm	120mm
Frame Material	1.2mm Galvanized Steel	1.2mm Galvanized Steel
Filling	Rock Wool	Rock Wool
Rabbet	double	double

抗爆门

Anti Explosion door
Industrial door

Industrial door part

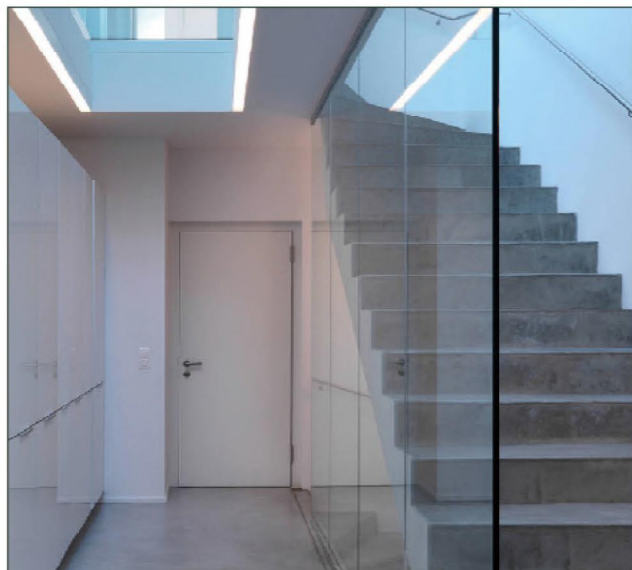


PRODUCT FEATURES

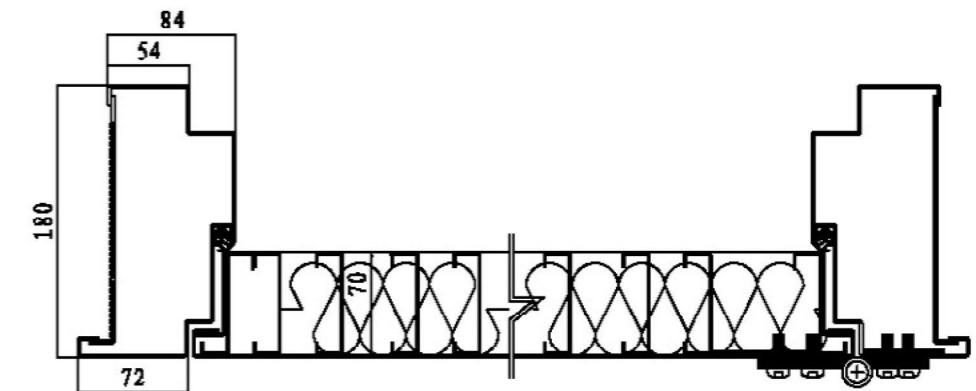
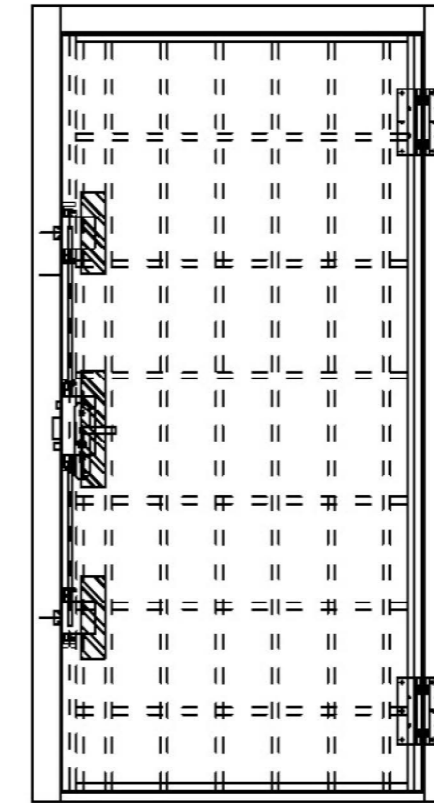
- Certificate: Chinese certification, Shake wave resistant is over 69Kpa
Door panel is 1.5mm Galvanized Steel
- Filling: 1.5mm galvanized steel square pipe and honeycomb (The distance between two pipes is less than 150mm)
- Door Thickness: 70mm
Door frame is made of 2.0mm Galvanized Steel with inserted seal on a rabbet.
- Frame Depth: 180 mm
- Hinges: Heavy-duty steel hinge
- Lock: Blast Resistant Lock
- Accessories: Expansion bolts & plastic covers for installation use

APPLICATION RANGE

- Applicable in chemical plant or room having dangerous cargo.
- Color and design can be made according to your needs



Drawings



Technical Parameters

Anti Explosion Door	Single	Single
Door THK	70mm	70mm
Door Material	1.5mm Galvanized Steel	1.5mm Galvanized Steel
Frame Depth	180mm	180mm
Frame Material	2.0mm Galvanized Steel	2.0mm Galvanized Steel
Filling	Paper honeycomb/Rock wool	Paper honeycomb/Rock wool
Rabbet	one	one
Hingle	8mm*/.0'	8mm*/.0'
Lock	Anti Explosion Lock	Anti Explosion Lock

泄爆门
Explosion Relief Door
Industrial door

Explosion Relief Door part

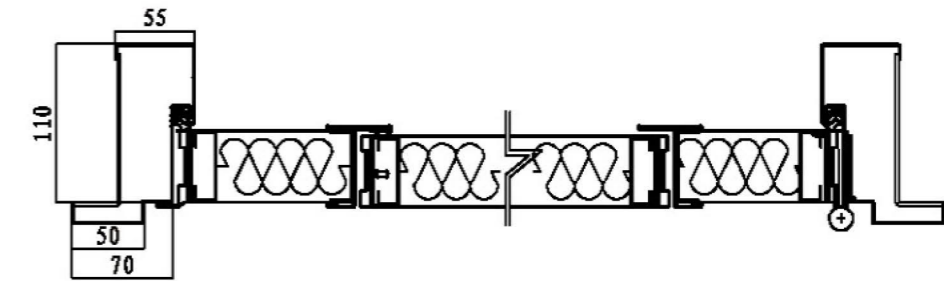
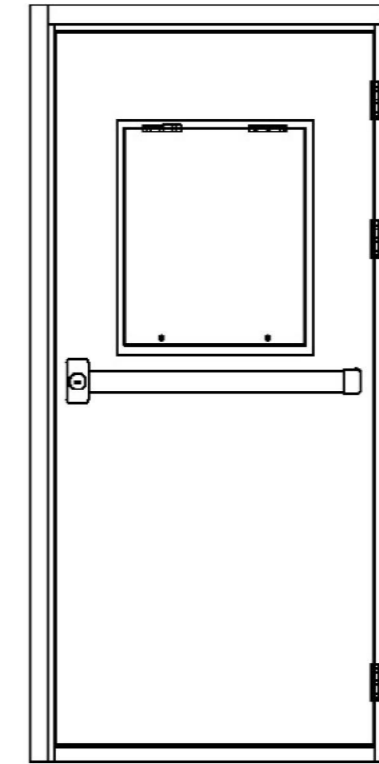


PRODUCT FEATURES

- Standards: Q/XBM01-2014<Blast Release Door> & ISO9001
- Certificate: Chinese certification
- Critical pressure is 100kgf/ m³
- The weight of Explosion relief panel \leq 20kgf/ m²
- The explosion relief panel can open about 40°
Door panel is 1.0mm Galvanized Steel
- Filling: 1.0mm galvanized steel square pipe and honeycomb (The distance between two pipes is less than 150mm)
- Door Thickness: 70mm
Door frame is made of 2.0mm Galvanized Steel with insert seal on the rabbet.
- Frame Depth: 110mm
The product is made of door frame, door, explosion relief panel and explosion relief device. In normal circumstances, the door and explosion relief panel are closed with all round rubber seal which make door has excellent performance in sealing capacity and stability. There is explosion relief device on the explosion relief panel, and there is security device on the window to prevent from the cell shed.



Drawings

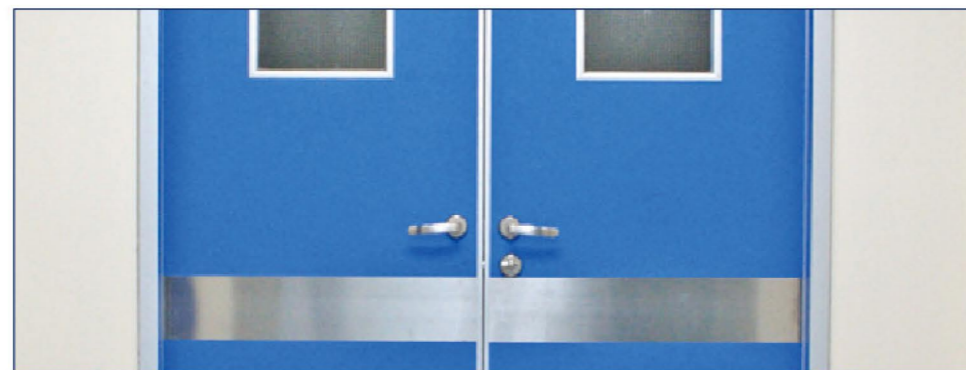


Technical Parameters

Explosion Relief Door	Single	Double
Door THK	50mm	50mm
Door Material	0.8mm Galvanized Steel	0.8mm Galvanized Steel
Frame Depth	110mm	110mm
Frame Material	1.2mm Galvanized Steel	1.2mm Galvanized Steel
Filling	Paper honeycomb/Rock wool	Paper honeycomb/Rock wool
Rabbet	one	one
Hingle	5*4*3	5*4*3
Lock	All kinds of lock/ Push bar	All kinds of lock/ Push bar

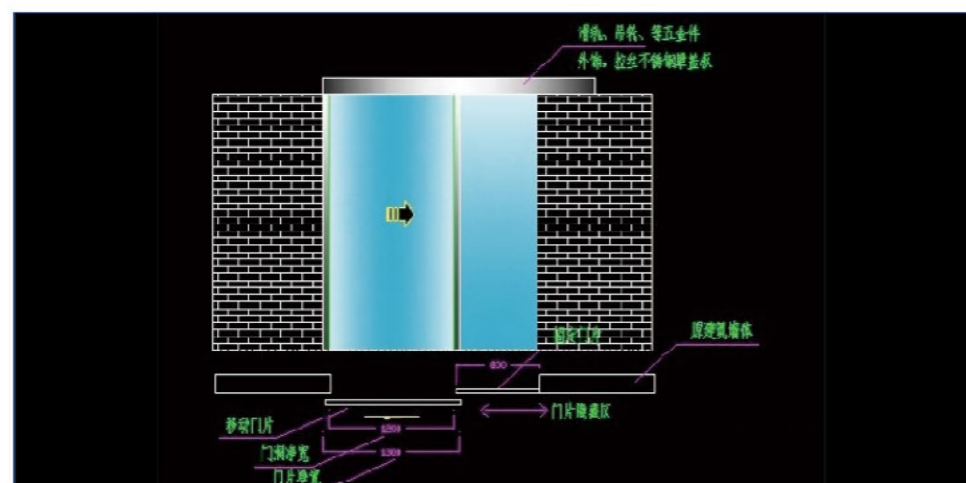
洁净门
Hospital Door
Industry

Hospital Door



PRODUCT FEATURES

- Airtight sliding door is integrated air-tight, soundproof, heat-preservation, compression, fireproof, dustproof and radiation-proof.
- The door has all round professional vacuum seals. And the special firm pressure technique keep the door and frame join tightly to get good seal.
- There are foot switch and professional handle on the door. Security sensor is acceptable. The sensor can be put into effect according to the customer's needs. The working methods of sensor can be fixed by doctor's work habits or characteristic of surgical operation.
- The door's standard size :appearance 1.55 (W) X 2.24(H) =3.14 m² , net width is 1.4m and weight is about 70kg, satisfied with the domestic hospital needs.



Technical Parameters

Door THK	<100kg
Close and Open	30-60cm/sec
Open Way	Foot/hand sensor
Wattage/Voltage	AC220V 50Hz
Shut Way	Automatic/Sensor
Noise	≤ 55dB
Environment Temp.	-20 °C -50 °C
Standard Wall Opening	1.5m x 2.1m
Outer Protective Structure	7.3m



门示意图

单元门

Apartment Door

Doubled, Single

Door Partial

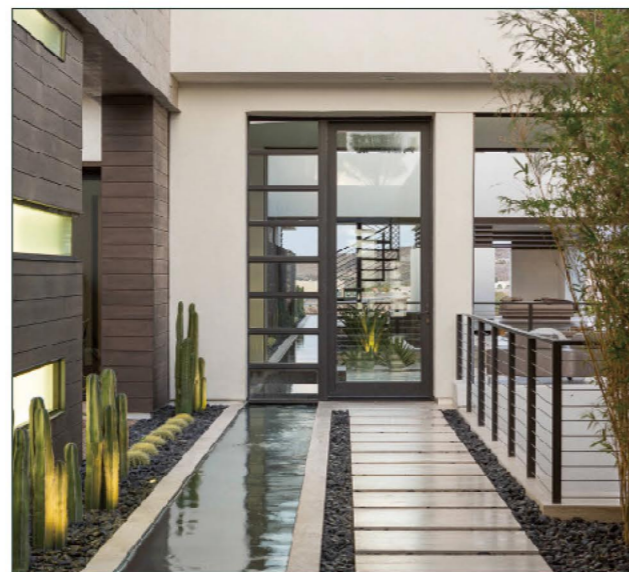
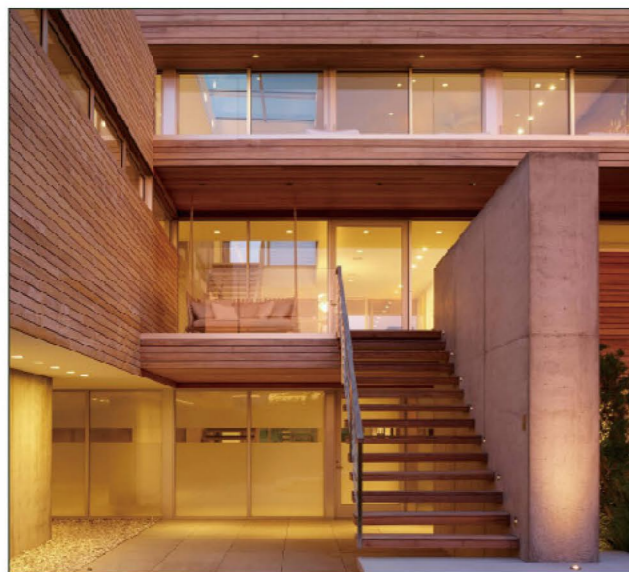


Technical Parameters

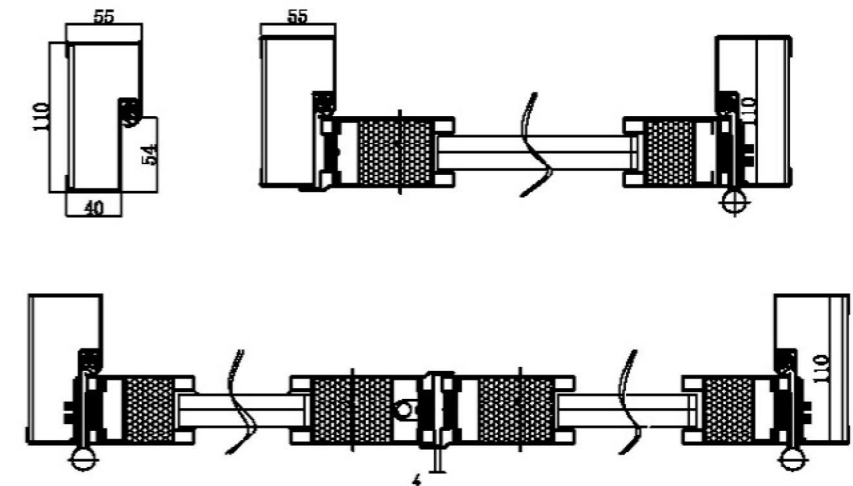
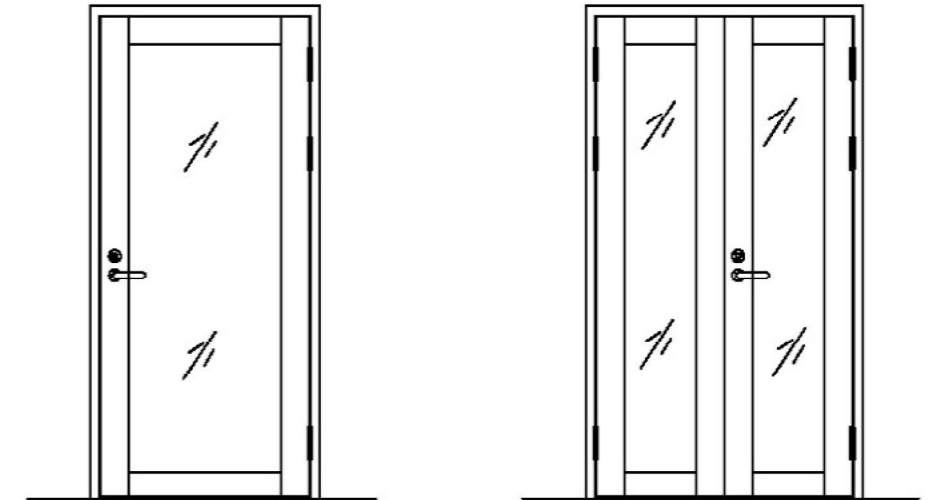
Apartment Door	Fireproof	Non-Fireproof
FP Time	90/60/30mins	/
Door THK	50mm	50mm
Glass THK	30mm/26mm	6+0.76+6
Frame Depth	120mm/100mm	110mm
Frame Material	1.2mm Glvanized Steel/ Stainless Steel	1.2mm Glvanized Steel/ Stainless Steel

APPLICATION RANGE

- This door is used in public place in real estate.
- And this door is especially suitable for commercial building, chemical building.
- Color and design can be made according to your needs



Drawings



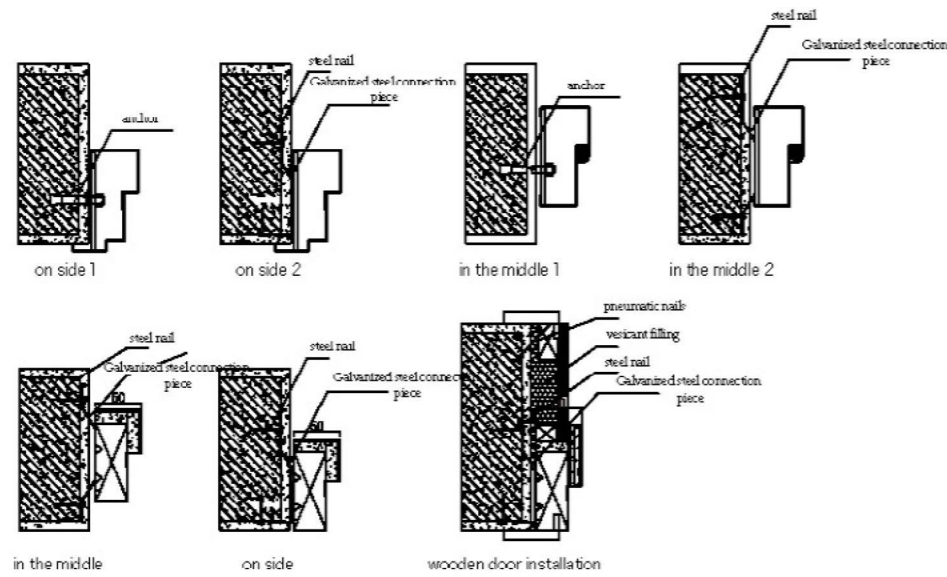
其他类

Others

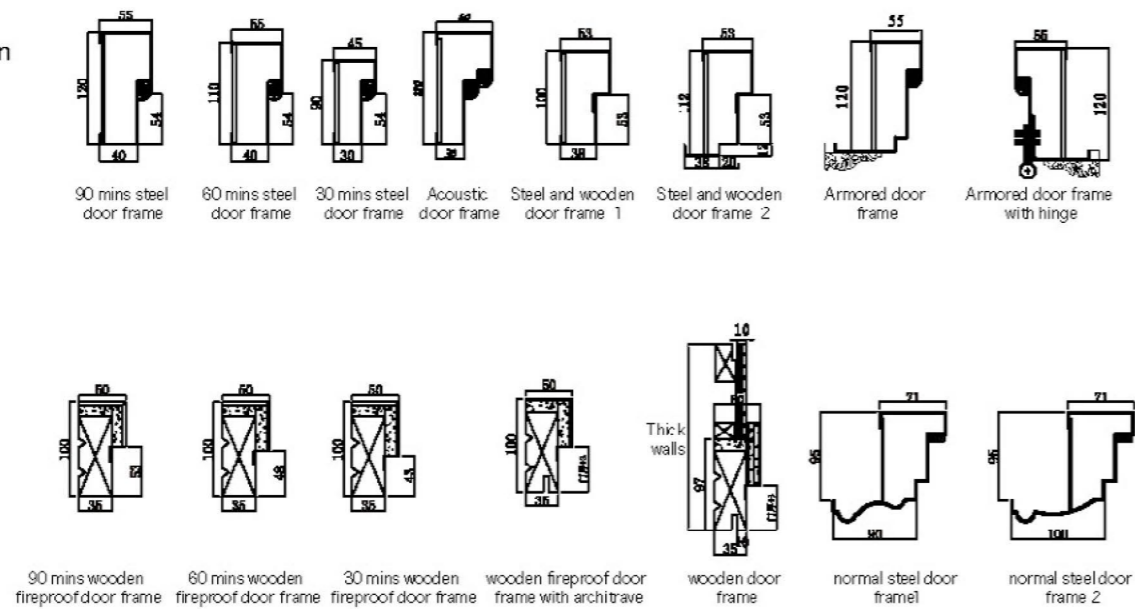
Industrial Single, Double



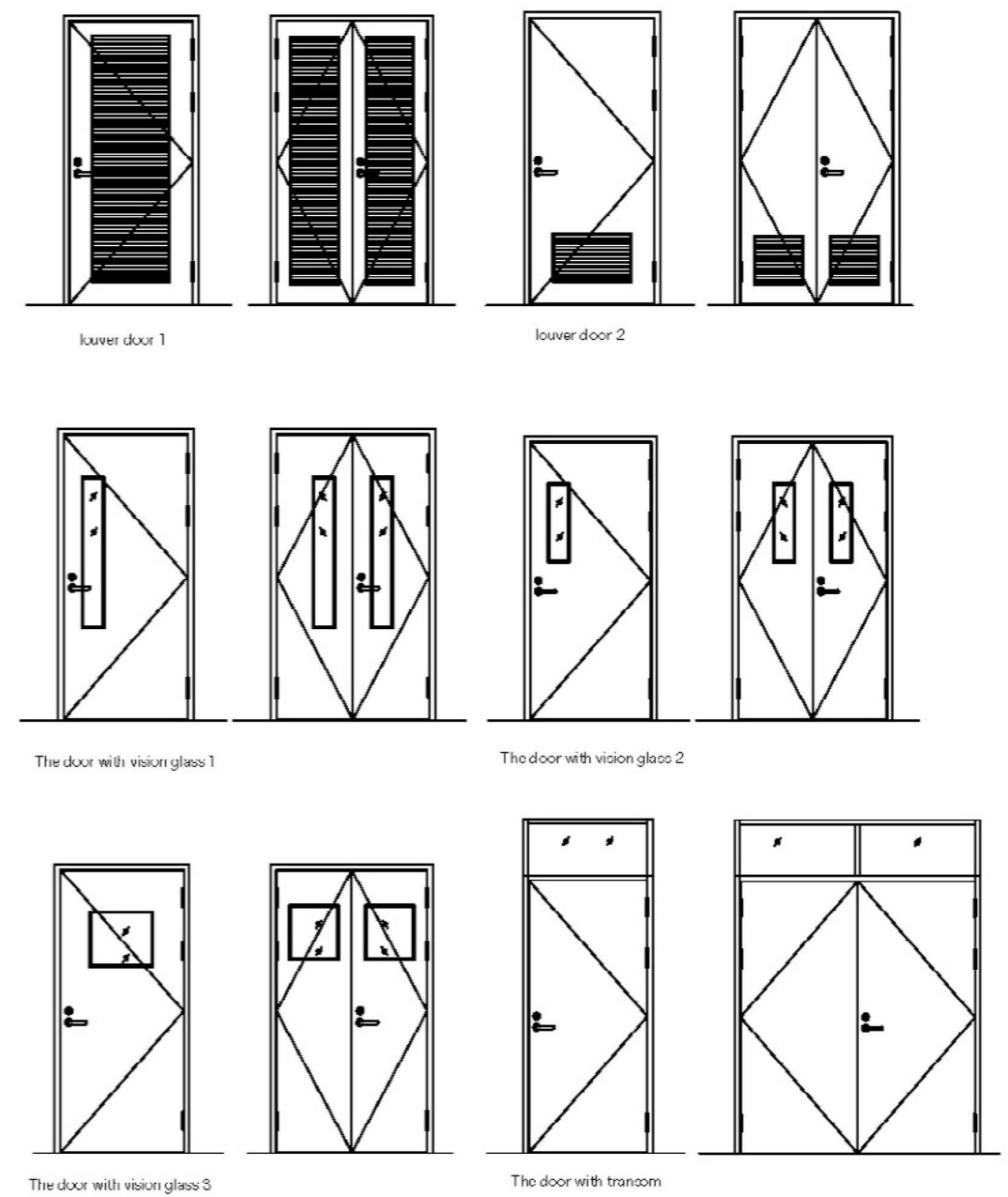
wooden door installation



Thwart Section



vision panel and louver



Steel Fireproof Windows

防火窗

Steel Fireproof Windows
Industrial

Steel Fireproof Windows
sample project

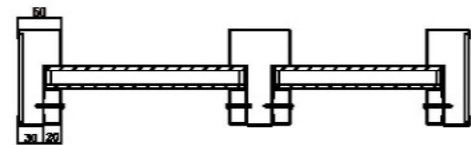
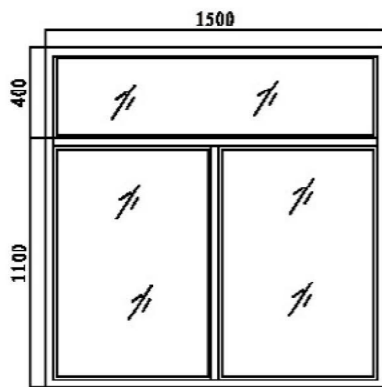


TECHNOLOGY DATA AND SIZE

Steel Fireproof Windows	Fixed
FP time	90/60/30mins
Fireproof Glass	30mm/26mm
Frame Depth	120mm/100mm
Frame Material	1.2mm Galvanized Steel

APPLICATION RANGE

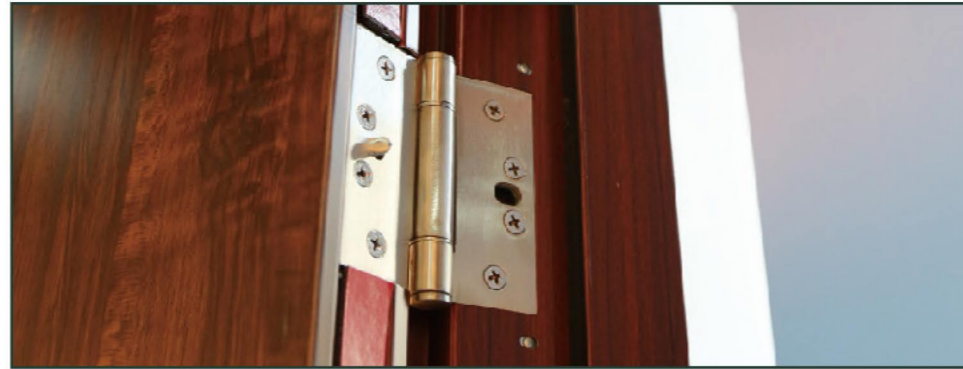
- This door is used in public place in real estate.
- And this door is especially suitable for commercial building, chemical building.
- Color and design can be made according to your needs



SUNFLOWER Civil door

防盗进户门
Steel Door
single door

Single Partial

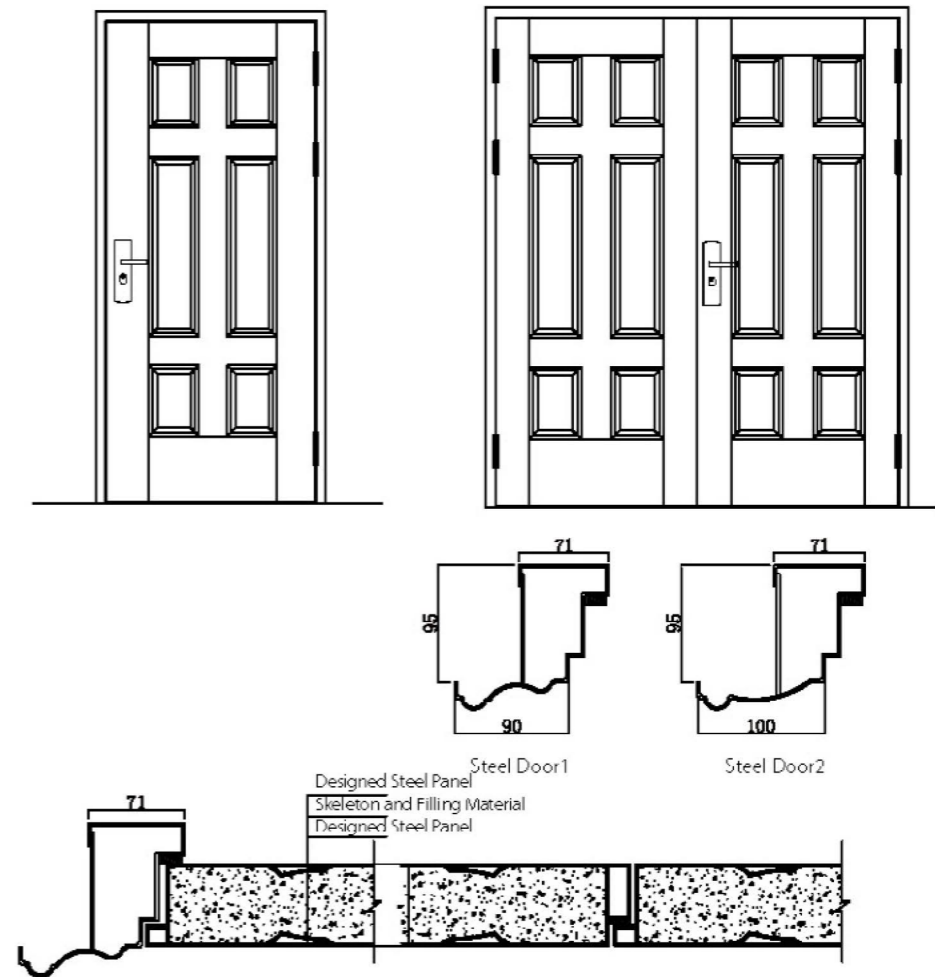


Technical Parameters

Steel Door	
Door THK	50mm~70mm
Door Steel	0.5-1.0
Frame Depth	95mm
Frame Steel	1.0 2.0
Filling	Perlite
Door Design	Choose according to steel door catalog
Lock	mechanical lock
Lock Point	20 16 14 12
Acoustics	35dB
Heat-Preservation	1.8-2.2W/m ³ .k



Drawings

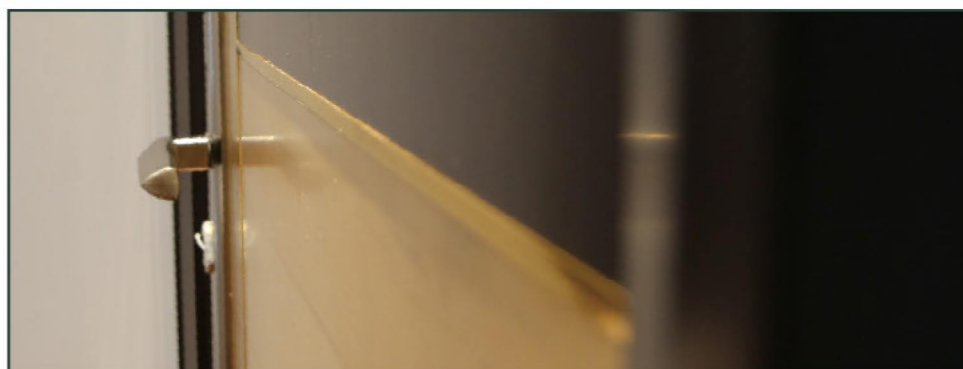


APPLICATION RANGE

- Applicable used in private house, apartment and so on.
- Color and design can be made according to your needs.

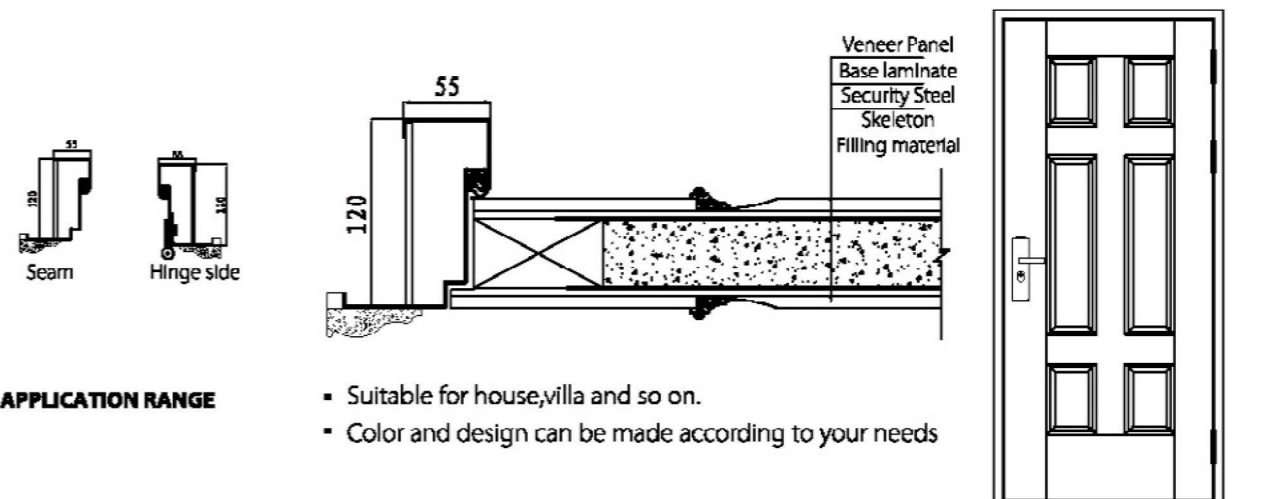
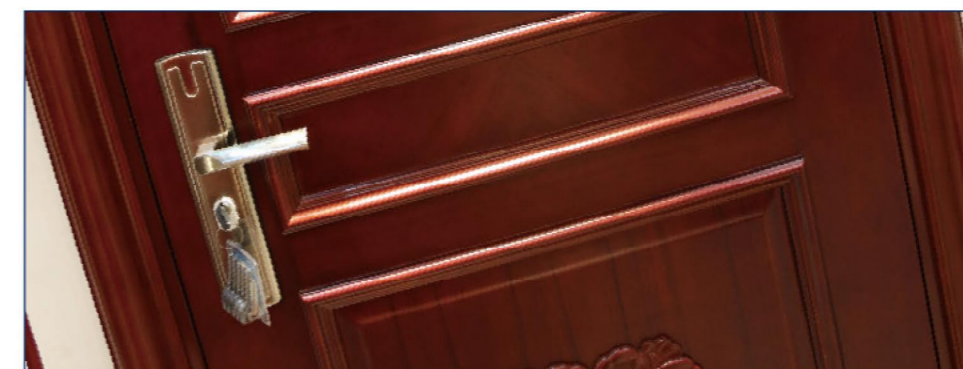


钢木入户门
Wood and steel entry door
Civil



Technical Parameters

Armored Door	
Door THK	60mm~70mm
Steel inside the door	0.8-1.0
Frame Depth	110mm
Frame Material	1.5-2.0mm Galvanized Steel
Filling	Perlite/ Paper honeycomb
Design	Choose according to armored door catalog
Lock	According to your needs
Lock Point	16/14/12pcs
Acoustic	35dB
Heat-preservation	1.8-2.2W/m ² .k
Design	Solid/Composite



APPLICATION RANGE

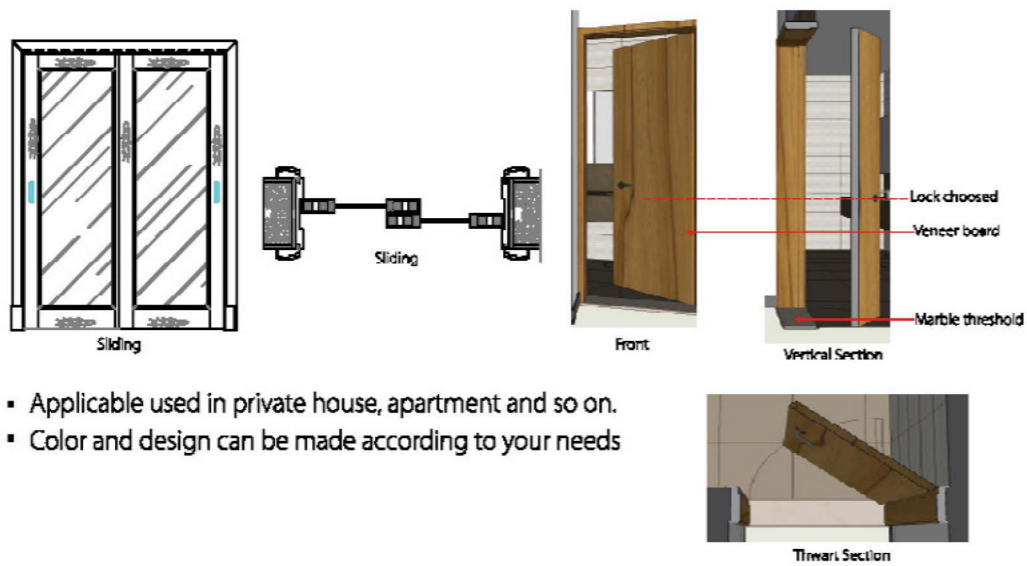
- Suitable for house, villa and so on.
- Color and design can be made according to your needs



木门

wooden door
Single, Double, Sliding

Single Partial

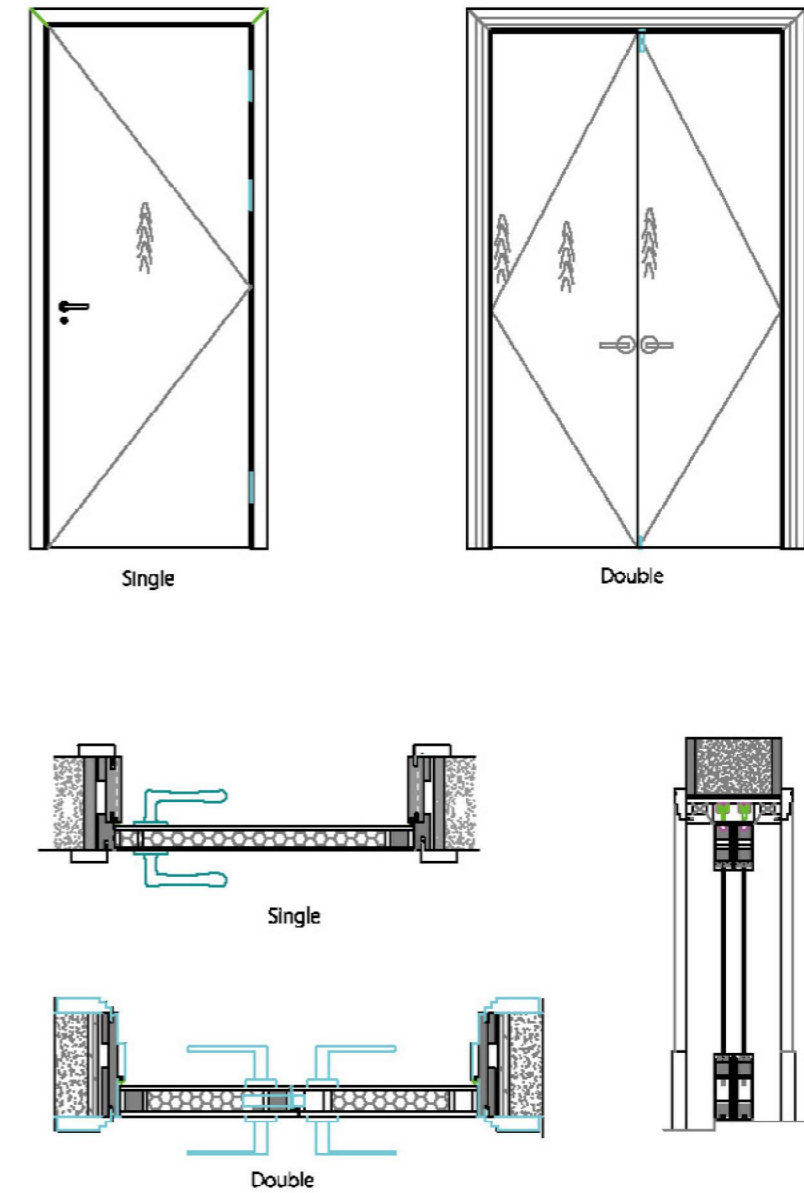


APPLICATION RANGE

- Applicable used in private house, apartment and so on.
- Color and design can be made according to your needs



Drawings



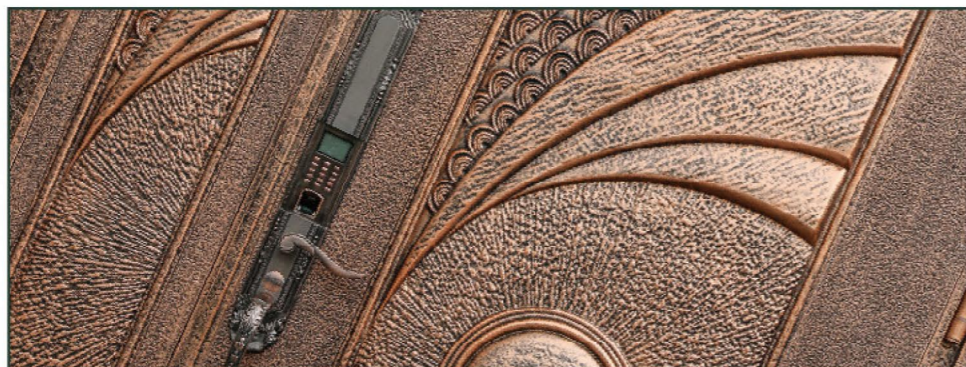
Technical Parameters

Wooden Door	Single	Double	Sliding
Door THK	40mm~50mm		
Door material	Solid wood/composite wood		
Frame	LVL		
Frame Depth	150~250		
Filling	chipboard/honeycomb		
Door Design	Choose according to wooden door catalog		
Lock	According to your needs		
Acoustic	35dB		
Heat-preservation	1.8-2.2W/m ³ .k		

铸铝门

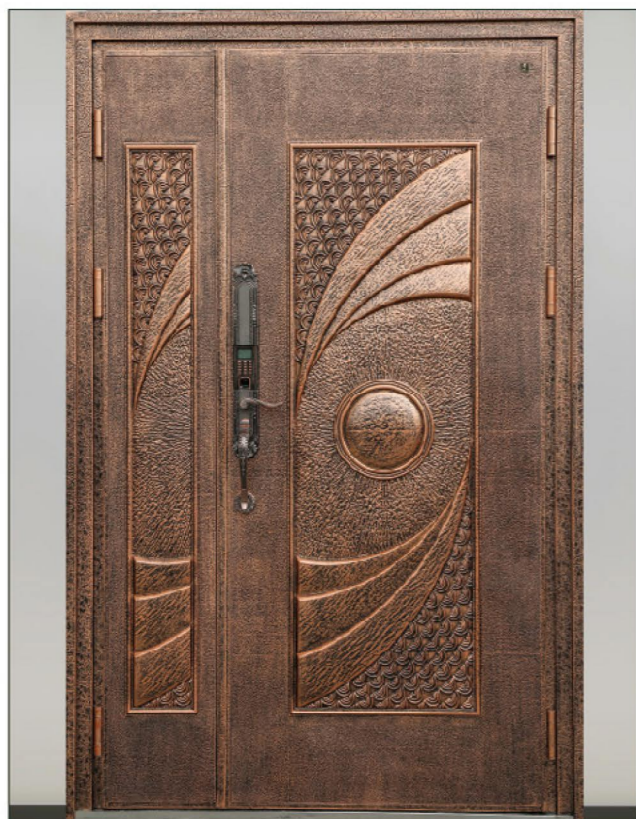
Casted Aluminum and Wood Door
Single, Double

Single Partial



APPLICATION RANGE

- Applicable used in private house, apartment and so on.
- Color and design can be made according to your needs



Multi-faceted perspective



PRODUCT FEATURES

- Hinge: This is 3D gravitational hinge. The strongpoint of this hinge is that the hinge is easy to be adjusted after long time use. So that door and frame will be always in best situation of open and close
- Security Safety Bolt: It is concealed into the door. When the hinge will be destroyed, the door will also not to be open.
- Lock: luxury lock, card lock, fingerprint lock and so on.



Completed projects brief

We are the certified fire door factory, own two production bases, we keep leading with advanced technology and superior service.

- Shangri-La Hotel
- Huafang Jinling International Hotel
- Le Grand Large Hotel
- Xin Ya Courtyard Hotel
- Ramada Hotel

- Bank of Shanghai
- Bank of Korea
- Agriculture Bank of China
- HSB
- HSBC
- Guangdong Development Bank
- Industrial and Commercial Bank of China
- China Construction Bank
- Industrial Bank
- BEA Global Financial Tower
- East West Bank

- Business office Building
- Chengdu Golden Center
- China National Offshore Oil Corp Building
- Gezhouba Dam building
- Rufeng Building
- Changning Convention and Exhibition Center



Completed projects brief

Sunflower doors are widely used in industrial and civil area, we are looking forward to work with you, and make progress together!

- Hangzhou Tower
- Bao Steel Pudong International Building
- Lujiazui Agricultural Bank Building
- Shenyang Taoxian Airport
- Penglai Chaoshui Airport
- Shanghai Pudong International Airport
- Provincial Public Security Traffic Management Bureau

- Shanghai Hongqiao Airport
- Shanghai Metro Traffic Line 11 Xincheng Station
- XinJiang Yili Airport
- Wusong International Cruise Terminal
- Shanghai Pudong International Airport Aviation Oil Co., Ltd.warehouse
- Shanghai Everbright Convention & Exhibition Center
- Shanghai Yuanshen Stadium
- Shanghai Songjiang Stadium

- Shanghai Volkswagen NO.3 Factory Assembly Workshop
- Shanghai Electric Power Co.,Ltd Wujing heat and power plant
- SDIC Datong Energy Co.,Ltd
- Huaneng Power International Nantong Power Plant
- Changshu NO.2 Municipal Solid Waste Incineration Power Plant
- SINOPEC
- Shanghai Volkswagen CPC Technology Center



SHANGHAI SUNFLOWER GROUP CO., LTD.
Tel: 0086 512 50178085 Fax: 0086 512 50178086
Web: www.shsunflowergroup.com
Email: sales@sundoors.com / ivan@sundoors.com